

tinyforest



What is Tiny Forest Maintenance?

A Tiny Forest is designed to be low maintenance, with minimal human intervention. In the first couple of years when the trees are most vulnerable, the Tiny Forest might need a bit of a helping hand and require a small amount of maintenance. These actions include weeding, litter-picking, checking on the saplings, mulch layer and fence/gate/benches etc.

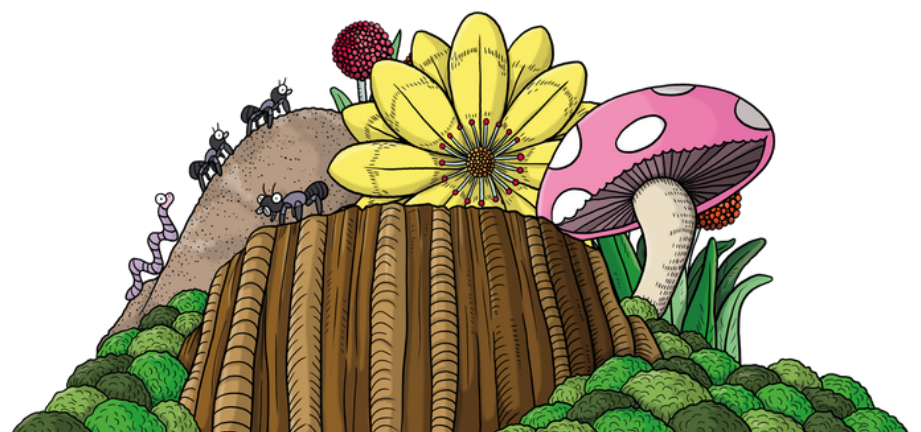
Tiny Forest Maintenance can be as simple as checking your Tiny Forest when you go out for a walk, and while you are there, pick up a bit of litter and keep an eye on the saplings. Report any exciting wildlife sightings. If there are any concerns with extreme weather or anti-social activities please let us know. If your Tiny Forest looks extra pretty, take pictures and share them with us. You could take your friends and family out to the Tiny Forest for a picnic and community care; do some weeding, spread the mulch around, relax with a cuppa tea and watch your Tiny Forest grow!

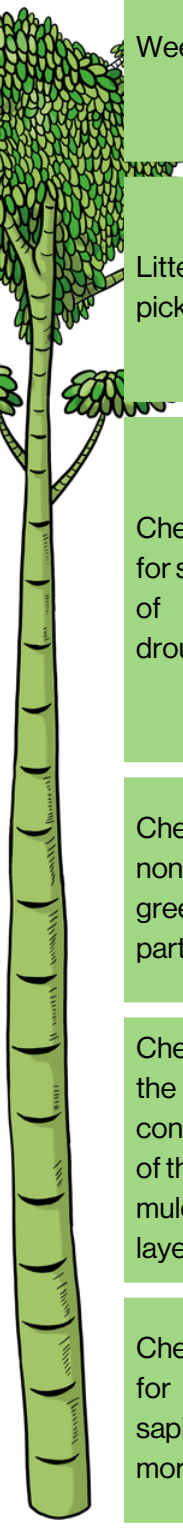
In the following page we have put together a reminder of what checks are needed, why and how often. It also details any relevant actions. When the tasks are split between the whole Tree Keeper Team we expect each individual will need to spend approximately an hour a month helping to care for the Tiny Forest. This offers you the opportunity to take ownership in the process of the Tiny Forest's development, and by visiting regularly, experience its truly dynamic nature.

We hope you enjoy watching your Tiny Forest flourish!

Best wishes,

The Tiny Forest Team
Earthwatch Europe





| What | Why | When | Action |
|--|--|--|--|
| Weeding | Weeds can compete with saplings for nutrients and water. Some 'weeds' can be beneficial though particularly if they are flowering, it is worth leaving these be as long as they are in flower. | Check once a fortnight during spring and summer. | Remove competitive weeds, chop or tear into pieces and leave as part of mulch layer. |
| Litter picking | Litter is a form of pollution, being a danger to wildlife as well as unsightly. Removing litter will help to discourage future occurrences. | Check once a fortnight to monthly throughout the year. | Pick litter in a safe manner, preferably as and when seen so that it is not left for long periods. As part of your Tree Keeper kit we supply a litter picker. |
| Check for signs of drought | Saplings are sensitive to extreme conditions especially after a period of severe drought. | Check once a fortnight during spring and summer. | Check plants for signs of water stress (yellowed, wilting or scorched leaves), also check beneath the mulch layer to see if the soil is moist. Only water when absolutely necessary. If you think watering is required, contact Earthwatch*, we can help organise watering with the landowner. |
| Check non-green parts | This includes the fence, gate, benches and information sign, as part of maintaining the area as a whole. These could be affected by adverse weather or vandalism. | Check monthly throughout the year. | Report any damages to Earthwatch*. |
| Check the condition of the mulch layer | The mulch layer keeps weeds at bay, protects the soil from UV until the canopy closes, and helps retain soil moisture. | Check monthly throughout the year. | Redistribution of the mulch layer can help maintain even coverage. However, a restock might be needed to ensure an even thick layer of mulch is maintained across the site for the first 2 years. If you think this is required, contact Earthwatch*. |
| Check for sapling mortality | Low level sapling mortality is expected. But in high quantities an adjustment in maintenance activity might be needed. | Check monthly throughout the year. | Look for trees with no new growth. Scratch the bark of the sapling with a fingernail, if it is green beneath, the sapling is still alive. If there is a large amount of mortality, report this to Earthwatch*. |

*contact Earthwatch via email tinyforest@earthwatch.org.uk



tinyforest
earthwatch
EUROPE

If you have any questions or concerns, email us at tinyforest@earthwatch.org.uk

For more information, visit tinyforest.earthwatch.org.uk

Stay in touch   