

JANUARY

It's the RSPB Big Garden Birdwatch, record the birds in your Tiny Forest

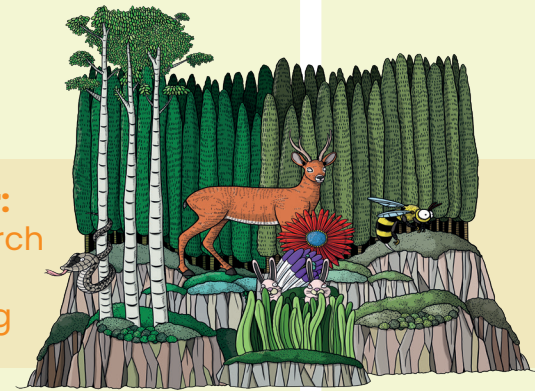


Training Webinar:

- Miyawaki planting method
- Flood management training
- What to do in your TF in winter

FEBRUARY

Start a dialogue on nature and mental health with your local schools and communities



Training Webinar:

- 2021/2022 research wrap up
- Educator training

MARCH

SPRING NEWSLETTER

Do some spring cleaning in your Tiny Forest! Invite your community for weeding and litter picking.

Training Webinar:

- TF science deep-dive
- How to engage your local school in TF

APRIL



Start of Tiny Forest monitoring season (May-Sept)



Spring photo shoot

Training Webinars:

- Biodiversity survey training
- Educator training

LITTER PICKING, CHECK SAPLING MORTALITY AND MULCH (ONCE A MONTH, ALL THROUGH THE YEAR) • WEEDING AND SIGNS OF DROUGHT (ONCE A FORTNIGHT, DURING SPRING AND SUMMER)

WINTER/DORMANT PHASE

GROWING/ACTIVE PHASE

MAY



Biodiversity Week (20-28 May)  
Carbon capture survey (anytime)

Celebrate Biodiversity Week in your Tiny Forest

Training Webinars:

- Biodiversity Week Q&A
- Nature connectedness

JUNE

SUMMER NEWSLETTER

Celebrate Go Wild! month with your community



Training Webinars:

- Biodiversity Week wrap up
- TF science deep-dive

JULY

It's the Big Butterfly Count! Take the biodiversity survey and count the butterflies in your Tiny Forest



Training Webinars:

- Nature connectedness
- How we use the monitoring data

AUGUST



Biodiversity survey (mid Aug-mid Sept)  
Flood management and thermal comfort survey



Training Webinar:

- Carbon capture training
- How to engage more volunteers

WEEDING AND SIGNS OF DROUGHT (ONCE A FORTNIGHT, DURING SPRING AND SUMMER) • LITTER PICKING, CHECK SAPLING MORTALITY AND MULCH (ONCE A MONTH, ALL THROUGH THE YEAR)

GROWING/ACTIVE PHASE

SEPTEMBER

AUTUMN NEWSLETTER



Carbon Storage Week (16-24 Sep)

It's Carbon Storage Week, go measure your trees!



Training Webinars:

- Carbon Week Q&A
- What to do in your TF in autumn and winter

OCTOBER



Start of Tiny Forest planting season (Oct-Mar)



Training Webinars:

- Carbon Week wrap up
- Fantastic fungi!

NOVEMBER

Celebrate National Tree Week in your Tiny Forest

Training Webinars:

- National Tree Week Quiz!
- Flood management and thermal comfort training
- How to engage with your local council



Flood management and thermal comfort survey

Training Webinars:

- Power of citizen science

DECEMBER

WINTER NEWSLETTER

WEEDING AND SIGNS OF DROUGHT (ONCE A FORTNIGHT, DURING SPRING AND SUMMER) • LITTER PICKING, CHECK SAPLING MORTALITY AND MULCH (ONCE A MONTH, ALL THROUGH THE YEAR)

GROWING/ACTIVE PHASE

WINTER/DORMANT PHASE

VARIOUS NATIONAL DAYS AND WEEKS YOU CAN CELEBRATE IN YOUR TINY FOREST:

JANUARY

27-29 RSPB's Big Garden Birdwatch until 30 Jan Big Schools Birdwatch with RSPB

FEBRUARY

1 week in Feb-Apr National Green Week  
7-13 Children's Mental Health Week

MARCH

3 World Wildlife Day  
20 World Rewilding Day  
21 International Day of Forests  
21 World Planting Day

APRIL

7 World Health Day  
22 Earth Day

MAY

1-31 No Mow May  
19 Outdoor Classroom Day-1  
20 World Bee Day  
22 World Biodiversity Day

JUNE

1-30 30 Days Wild  
5 World Environment Day  
10-18 Great Big Green Week  
19-25 National Insect Week

JULY

1-31 Plastic Free July  
14 Jul-6 Aug Big Butterfly Count  
28 World Nature Conservation Day

AUGUST

14 World Lizard Day  
20 World Honey Bee Day

SEPTEMBER

4 National Wildlife Day  
18-26 Great Big Green Week  
26 World Environmental Health Day

OCTOBER

7 World Fungus Day  
21 Reptile Awareness Day  
21 World Earthworm Day

NOVEMBER

3 Outdoor Classroom Day-2  
26 Nov-4 Dec National Tree Week

DECEMBER

2-3 Tree Dressing Day  
5 World Soil Day  
14 Dec-5 Jan Christmas Bird Count  
25 Dec-5 Jan 12 Days Wild